

Winter Injury Studies 2009/10

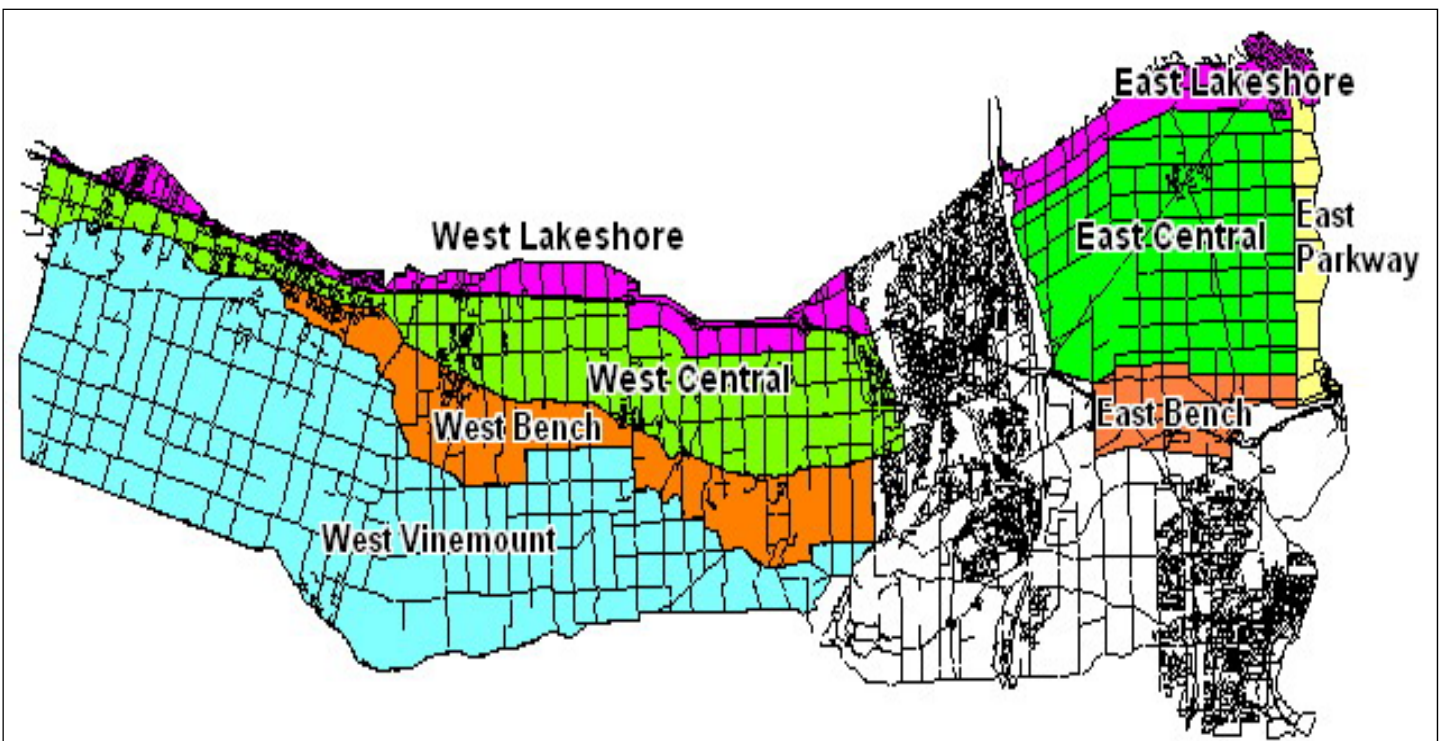
Grape Bud Survival

March 1, 2010 (West)
February 22, 2010 (East)



Grape bud sampling to establish winter survival is part of a – Ontario Grape & Wine Research Incorporated funded Winter Injury project. The tables in this article, report the sampling results based on the bud collection in the west end regions during the week of March 1st, 2010 and in the east end regions during the week of February 22nd, 2010. However, the percent alive may vary up or down from the last sample due to the variation in the samples taken. The tables below are based on multiple samples and multiple sites within in area for each cultivar.

The Parkway zone runs approximately 1 km along the west side of the Niagara River from Niagara-on-the-Lake to Queenston; the Lakeshore zone is approximately 1 km south of the lake from the Niagara River to Grimsby; the Central zone continues south of the Lakeshore zone to the base of the escarpment; the Bench zone starts at the south side of the Central zone to the brink of the escarpment and the Vinemount zone runs south of the Bench Zone.



8 Sampling Zones Used

% Live Buds - Vinifera – Mar 1, 2010 & Feb 22, 2010 (NS means no sample taken)

Cultivar	Location	West of Canal (Week of Mar 1/10)	East of Canal (Week of Feb 22/10)
Cabernet Franc	Bench	70-88	79-94
	Central	80-85	79-82
	Lakeshore	78-87	78-90
	Parkway	NS	77-84
	Vinemount	78-89	NS
Cabernet Sauvignon	Bench	79-85	82-90
	Central	73-87	79-80
	Lakeshore	84	80-82
	Parkway	NS	81
	Vinemount	79-87	NS
Chardonnay	Bench	75-93	87-89
	Central	77-91	81-93
	Lakeshore	83-92	96
	Parkway	NS	84-89
	Vinemount	89-91	NS
Merlot	Bench	74-90	78-83
	Central	78-93	79
	Lakeshore	80-90	73-76
	Parkway	NS	78-80
	Vinemount	76-89	NS
Pinot Noir	Bench	87-96	82-92
	Central	70-93	78-94
	Lakeshore	91	85
	Parkway	NS	85-86
	Vinemount	84-92	NS
Riesling	Bench	73-86	77-80
	Central	71-81	76-84
	Lakeshore	83-84	65
	Parkway	NS	79-85
	Vinemount	78-87	NS
Sauvignon Blanc	Bench	70-80	86
	Central	75-82	78-85
	Lakeshore	66-89	67-75
	Parkway	NS	68-70
	Vinemount	78-83	NS
Syrah	Bench	72	78
	Central	60	NS
	Lakeshore	71	70
	Parkway	NS	57-71

% Live Buds - Hybrids – Mar 1, 2010 & Feb 22, 2010 (NS means no sample taken)

Cultivar	Location	West of Canal (Week of Mar 1/10)	East of Canal (Week of Feb 22/10)
Baco Noir / Foch	Bench	93-94	NS
	Central	81-87	91-94
	Parkway	NS	89-92
	Vinemount	85-91	NS
Vidal	Central	76-87	88-91
	Lakeshore	94	85-90
	Parkway	NS	84-88
	Vinemount	84-91	NS