

# Winter Injury Studies 2009/10

## Grape Bud Survival

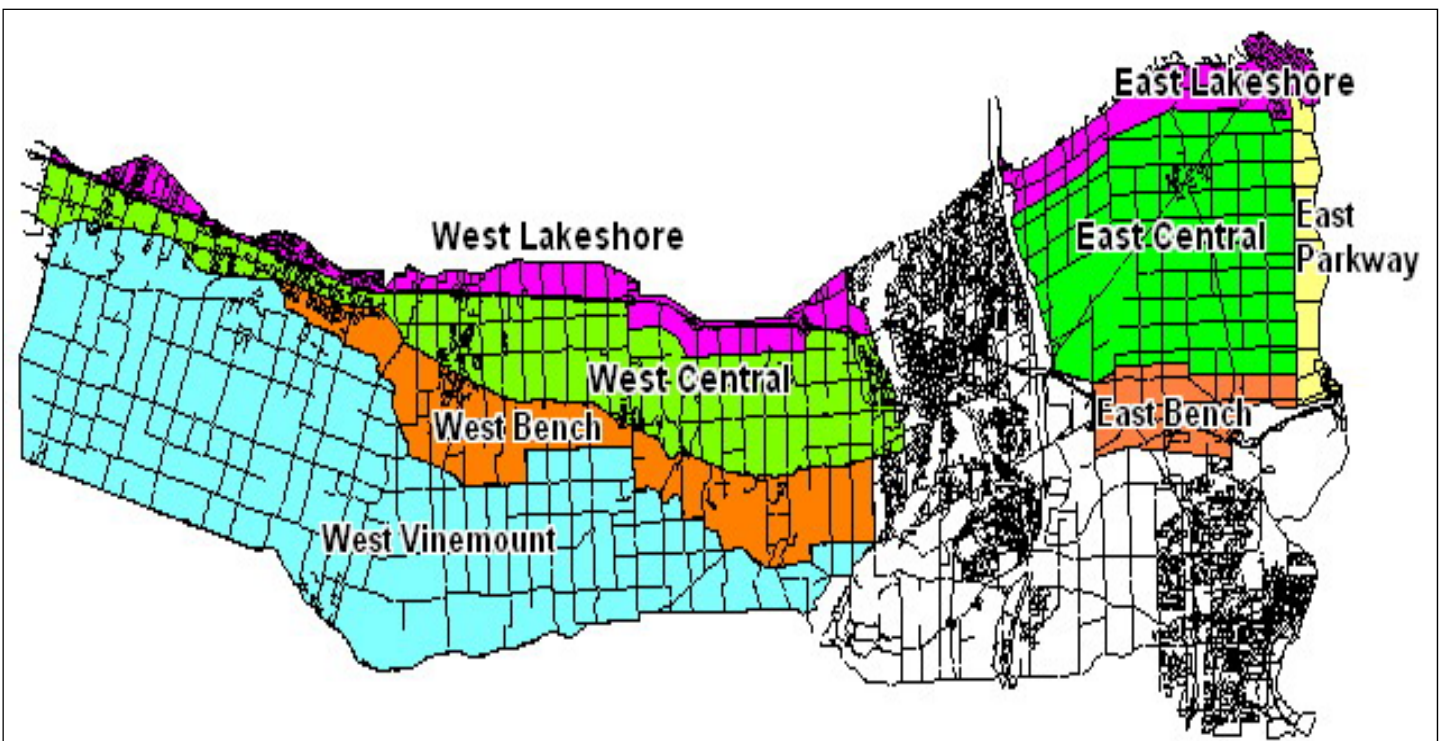
### February 1, 2010 (West)

### January 25, 2010 (East)



Grape bud sampling to establish winter survival is part of a – Ontario Grape & Wine Research Incorporated funded Winter Injury project. The tables in this article, report the sampling results based on the bud collection in the west end regions during the week of February 1<sup>st</sup>, 2010 and in the east end regions during the week of January 25<sup>th</sup>, 2010. However, the percent alive may vary up or down from the last sample due to the variation in the samples taken. The tables below are based on multiple samples and multiple sites within in area for each cultivar.

The Parkway zone runs approximately 1 km along the west side of the Niagara River from Niagara-on-the-Lake to Queenston; the Lakeshore zone is approximately 1 km south of the lake from the Niagara River to Grimsby; the Central zone continues south of the Lakeshore zone to the base of the escarpment; the Bench zone starts at the south side of the Central zone to the brink of the escarpment and the Vinemount zone runs south of the Bench Zone.



8 Sampling Zones Used

**% Live Buds - Vinifera – Feb 1, 2010 & Jan 25, 2010 (NS means no sample taken)**

<b>Cultivar</b>	<b>Location</b>	<b>West of Canal (Week of Feb 1/10)</b>	<b>East of Canal (Week of Jan 25/10)</b>
Cabernet Franc	Bench	68-74	81-89
	Central	67-85	87-88
	Lakeshore	84	86-90
	Parkway	NS	84-89
	Vinemount	77-78	NS
Cabernet Sauvignon	Bench	87	88-89
	Central	67-87	87-91
	Lakeshore	80-88	85-94
	Parkway	NS	88-90
	Vinemount	71-79	NS
Chardonnay	Bench	84-92	90-91
	Central	83-86	89-92
	Lakeshore	80-81	89-91
	Parkway	NS	82-91
	Vinemount	83-86	NS
Merlot	Bench	78-85	87-97
	Central	63-90	88-92
	Lakeshore	72-87	84-90
	Parkway	NS	84-89
	Vinemount	67-84	NS
Pinot Noir	Bench	76-85	81-90
	Central	79-85	90-93
	Lakeshore	75	83
	Parkway	NS	89
	Vinemount	76	NS
Riesling	Bench	80-88	87
	Central	76-89	84-85
	Lakeshore	83-90	78-86
	Parkway	NS	81-82
	Vinemount	90-91	NS
Sauvignon Blanc	Bench	64-79	83
	Central	65-82	84-88
	Lakeshore	84	81-84
	Parkway	NS	79-80
	Vinemount	76	NS
Syrah	Bench	68-75	75
	Central	63-64	NS
	Lakeshore	71	71
	Parkway	NS	68-70

**% Live Buds - Hybrids – Feb 1, 2010 & Jan 25, 2010 (NS means no sample taken)**

<b>Cultivar</b>	<b>Location</b>	<b>West of Canal (Week of Feb 1/10)</b>	<b>East of Canal (Week of Jan 25/10)</b>
Baco Noir / Foch	Bench	91-94	NS
	Central	86-90	92-93
	Parkway	NS	90
	Vinemount	89-94	NS
Vidal	Central	88-92	90-96
	Lakeshore	94	89-96
	Parkway	NS	87-91
	Vinemount	89-91	NS